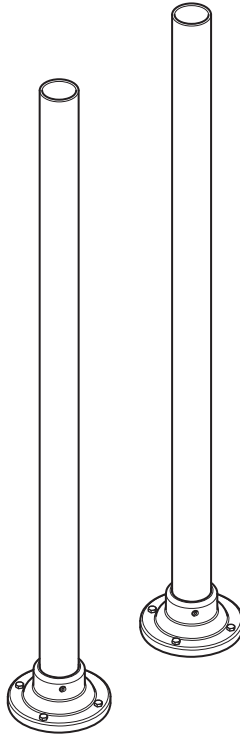


LB 2120
STANDPIPE SLEEVES
INSTALLATION GUIDE

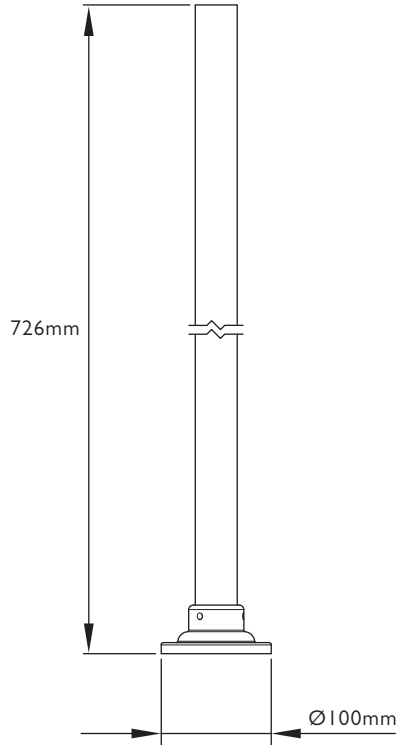


LEFROY BROOKS

DIMENSIONS

Taller standpipe sleeves can be specified at the point of order.

To reduce the height of the standpipe sleeves please see the 'Installation – Reducing height of standpipe sleeves' section.



Not to scale

IMPORTANT INFORMATION

Mounting surface

Standpipe sleeves are NOT suitable for mounting on solid floors. Where a solid floor exists, with pipework already in place, a plinth can be constructed to allow supply connections to be made above floor level.

Suitability

Standpipe sleeves are purely decorative covers for concealing pipework and not designed for supporting bath mixer/fillers.

Standpipe sleeve variations and adjustments

Taller standpipe sleeves must be specified at the point of order.

Standpipe sleeves can be shortened on site – see 'Installation – Reducing height of standpipe sleeves' section.

Supply connections

The HOT water supply should be passed through the LEFT standpipe sleeve and COLD through the RIGHT standpipe sleeve as viewed from the front of the mixer/filler.

Professional installation

We recommend that our products are fitted by a fully qualified professional plumber. They should be installed correctly and in accordance with all local water regulations and the system protected by non-return valves (not supplied). All products should be accessible for routine servicing.

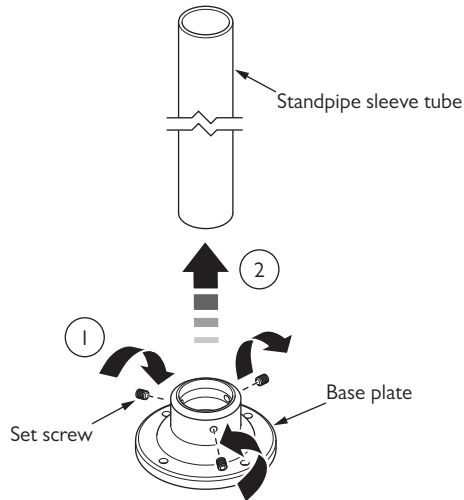
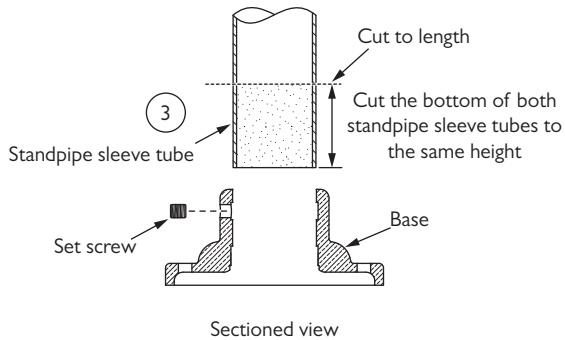
Water quality

In hard water areas, a suitable water treatment system should be provided to prevent limescale deposits (calcium deposits). Exterior surfaces should be gently wiped with a dry soft cloth after use to minimise water stains and limescale deposits.

Servicing

All serviceable parts are available to maintain your Lefroy Brooks product.

INSTALLATION – REDUCING HEIGHT OF STANDPIPE SLEEVES

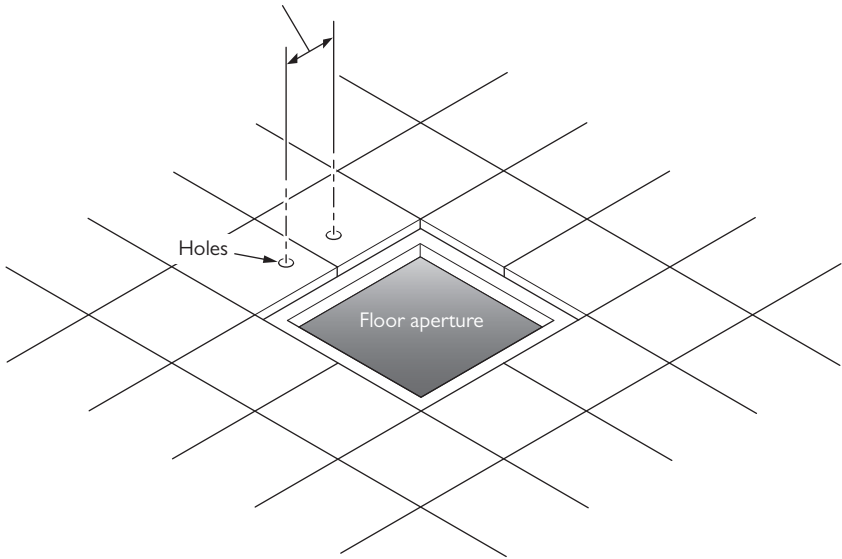


If required the standpipe sleeves can be shortened as follows:

- 1 Remove the three set screws from each standpipe sleeve base plate using a 3mm hexagonal key.
- 2 Separate both standpipe tubes from their base plates.
- 3 Accurately mark the bottom of both standpipe sleeve tubes ensuring that both marks are the same height.
- 4 Cut the bottom from both standpipe sleeve tubes and remove any sharp edges.
- 5 Fit the standpipe sleeve tubes into the base plates. Secure using the set screws removed previously.
- 6 Check that both standpipe sleeve heights are the same.

INSTALLATION

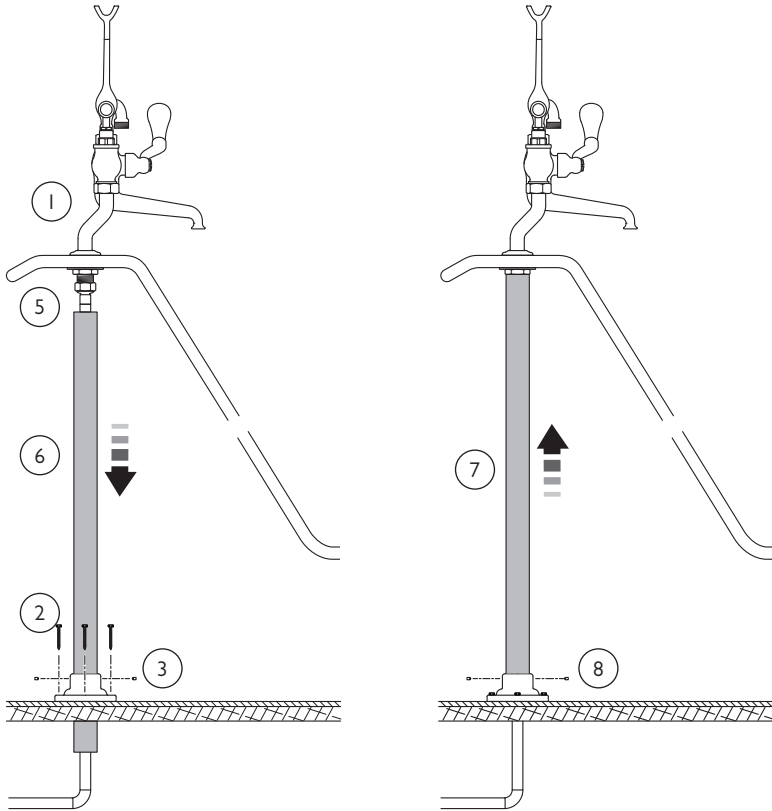
Ø45mm minimum holes. The centres must match the hole centres in the bath.



Considerations when choosing a location for standpipes:

- Are there any joists, existing pipework or wiring immediately below the standpipes?
- Ø45mm holes for pipework should be made in the mounting surface prior to tiling.
- If the floor surface is to be covered or tiled prior to installation, ensure a space is left for the installation.
- Floor boards should be removed or cut to leave a suitable working aperture.

INSTALLATION



- 1 Secure the mixer to the bath.
- 2 Locate the standpipe sleeves in place. Ensure that the screw holes in the base plates are positioned as required. Secure the base plates to the floor using suitable fixings. Screws are supplied, but specific installations may require special fixings (not supplied).
- 3 Remove the three set screws from each base plate.
- 4 Slide the standpipe sleeve tubes down into the floor space, taking care not to damage the outer surfaces.

- 5 Complete the supply connection to the mixer using a G $\frac{3}{4}$ tap connector.
- 6 Pressure test the connections before concealing the joints.
- 7 Slide the standpipe sleeve tube upward to cover the pipework.
- 8 Fit and tighten the three set screws in each base plate.

FAULT FINDING

Water leaks from the connection with the mixer valve.

- Connections not tight.
- Rubber washers are not fitted.



CONTRACT ENQUIRIES

+44 (0)1992 708 316

info@lefroybrooks.co.uk

CUSTOMER SERVICE, SPARES & TECHNICAL ENQUIRIES

+44 (0)1902 390 894

technical@lefroybrooks.co.uk

LEFROYBROOKS.CO.UK

Whilst every effort is made to ensure the accuracy of these, they are subject to change without notice as part of the company's product development process. The use of trademarks, product design and artwork is subject to licence or agreement with LBIP Ltd. The design registrations, trademark registrations and copyrights are protected by law and the use or reproduction outside the terms of an agreement is prohibited. The right to modify designs and dimensions is reserved. LBIP Ltd is a member of ACID (Anti Copying in Design). E&OE